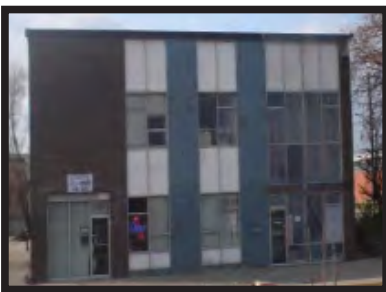




*project case study*  
**Dunleavy Cordun Head Office**



Original 1960's-era building

This 50-year-old building in mid-town Toronto was in need of assistance. The mansard roof was deteriorating and the remaining brick had started to spall. This was an opportunity to create an inspiring design. After the demolition, a custom aluminum sub-structure (iClad by Dunleavy Cordun) was installed. This framing permitted a sweeping arch across the face of the building, with two curved radii. The existing window mullions and entryway were also clad with compact laminate, a unique, multi-purpose building material. This building, once tired and aging, is now the talk of the neighbourhood.

**ARCHITECT**

James Fryett Architect Inc.  
 Contact: Brian McColloch

**STRUCTURAL ENGINEER**

Moses Structural Engineers Inc.  
 Contact: David Moses

**SCOPE OF WORK**

Front facade restoration with iClad installation: Design, engineering, architectural drawings, sub-structure custom fabrication, and panel fitting.